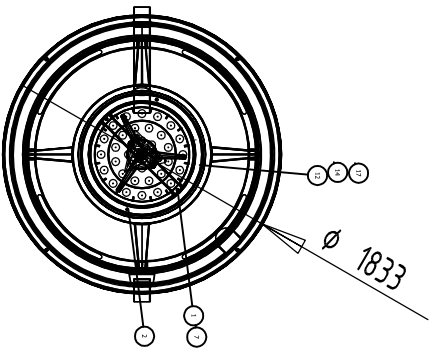
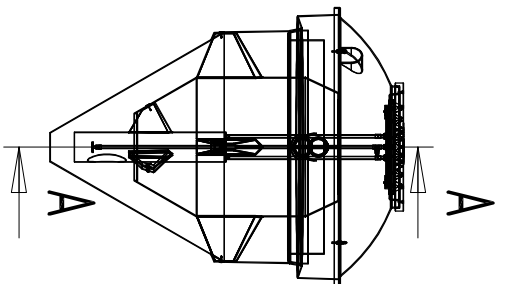


SECTION A-A



Item	Component Description	Quantity
1	02-800-000 WASHER FLAT M8 S/S - vmi stock	2
2	03-110-050 M10x50 Hex Head Stainless Steel Set Bolt - vmi stock	2
3	04-010-000 NUT M10 GALVANISED - vmi stock	8
4	05-010-001 M10 GALVANISED WASHER 30mm od (14.527) - vmi stock	20
5	06-110-040 M10x40 HT HEX SETS DIN 933 GALVANISED - vmi stock	12
6	06-116-072 HEX SELF TAPPER CIW BONDED WASHER A2 6x50	4
7	07-605-008 M8 x 20 CROSSED PAN HEAD SCREW IN NYLON COLOUR NATURAL	2
8	20-110-050 PIPE PLAIN END 110mm SEWER PVC	0.9
9	20-110-051 GROMMET TO SUIT 110mm PIPE	2
10	80-000-160 SIDE SEAL EPDM - GRIP RANGE - 4.5mm	1
11	30-100-120 GELCOAT GREEN 14-C-39	2.5
12	70-010-125 RWET 4.8 x 14mm S/S (GRIP RANGE 70-90)	2
13	70-010-126 Steel Zinc Plated Dome Head Rivets - 5.0 x 30mm	7
14	80-000-097 M10 X 13 HEADED WOODCERT	2
15	80-100-049 M10 DIN 882 EYENUT (TESTED AND CERTIFIED) - 17310	4
16	80-100-091 LABEL DIAMOND (330x850mm) 3 COLOURS/GLOSS WHIT EH-TACK	2
17	80-100-082 Serial number plate aluminium (50 x 20 x 0.5mm)	1
18	DD-652-003 Rola Diamond (A) Diffuser Pipe Support Bridge Issue D	1
19	DD-652-105 Diamond (A) Rola mould Lid Issue A	1
20	DD-652-106 Rola Diamond (A) large cover	1
21	DD-652-107 Rola Diamond (A) Diffuser Pipe Assembly Issue A	1
22	DD-652-201 Diamond A Rola mould Draft Tube Issue A	1
23	DD-652-203 Diamond A Rola mould Aeration Chamber	1
24	DD-652-206 Diamond A Rola mould ScurryWear Ring Issue A	1
25	DD-652-260 Diamond A carcass	1

ISSUE	DATE	CHANGE	NAME
A		NEW DRAWING	
B	10/12/12	BDM MODIFIED	P8



WPL LIMITED
1 & 2 ASTON ROAD
WATERLOO VILLE
HAMPSHIRE
PO7 7UX
TEL: (02392) 242600
FAX: (02392) 242624
e-mail: engineering@wpl.co.uk

© This drawing is the copyright of WPL Ltd

DIMENSIONS ARE IN mm	
TOLERANCES:	= / - 10MM
MATERIAL:	GRP AND POLYETHYLENE INTERNALS
FINISH:	GREEN 14C39
DD NOT SCALE DRAWING	

NAME	DATE
DESIGN	
CHECKED	
BRANN	

TITLE
DMS2
DRG - ROTAMOULD
WPL CARCASS

SIZE	DWG. NO.	REV
A4	DD-652-311	B
SCALE	SHEET 1 OF 1	